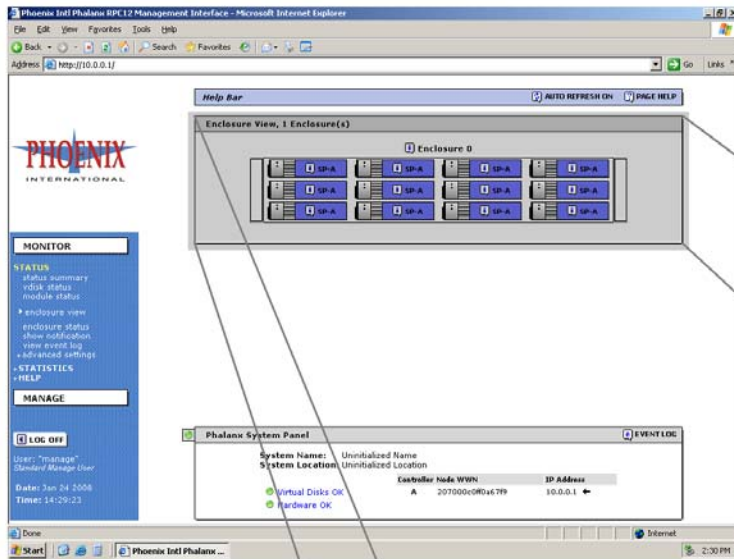
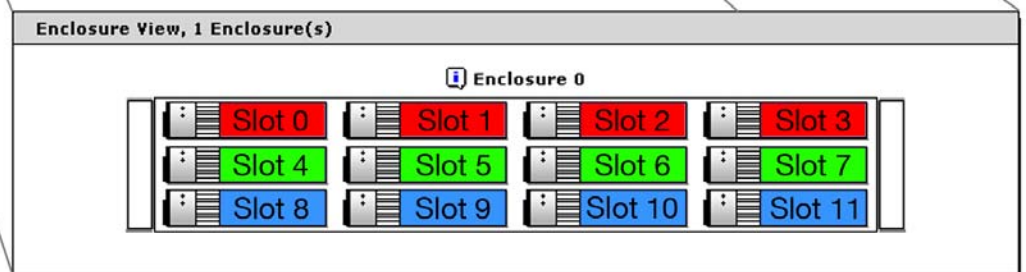


# Enclosure Graphic Interpreter

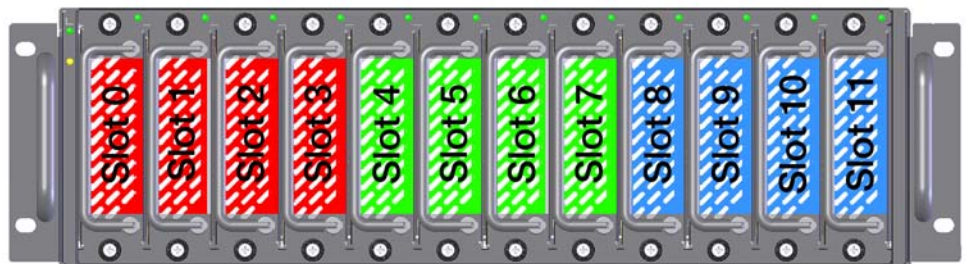
When accessing the RPC management GUI, the graphic representation of the RPC12 enclosure within the GUI does not match the layout of the physical chassis. To determine the location of an installed hard drive assembly, use the translation of the GUI graphic to the physical chassis found below.



GUI View



Graphic of enclosure within GUI



RPC12 Front View